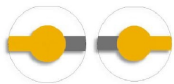


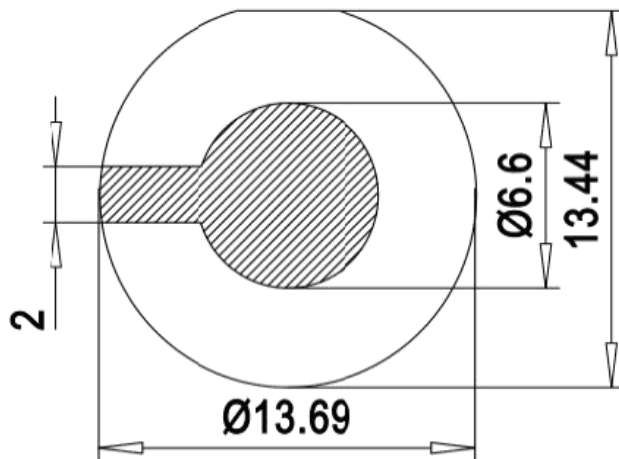
Specification	AXQCS301C	Rev.: 1	Date: 2020-11-02
---------------	-----------	---------	------------------



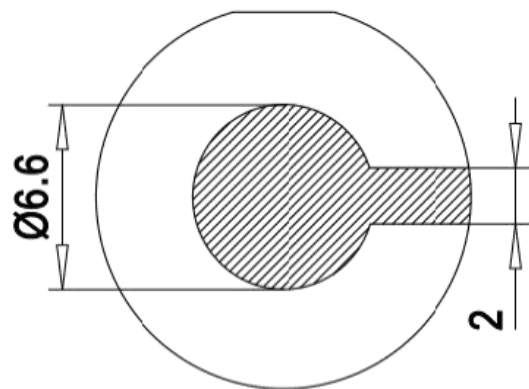
## Quartz Crystal Sensor Element

Parameter	min.	typ.	max.	Unit	Condition
Nominal frequency		3.000		MHz	
Adjustment frequency		3.000		MHz	
Crystal cut		AT			35°15'±2'
Overtone		1			
Frequency tolerance	-5		+5	kHz	
Frequency stability					
Over operating temperature range	-50		+50	ppm	
Resonance resistance R <sub>r</sub>			30	Ω	
Motional capacitance C <sub>1</sub>				fF	
Shunt capacitance C <sub>0</sub>			20	pF	
Drive level		100		μW	
Operating temperature range	+60	+70	+80	°C	
Storage temperature range	-40		+105	°C	
QCM diameter	13.69x13.44 +0/-0.03			mm	Plano-plano
Blank surface quality	Polished				R <sub>a</sub> = 0.012 ~ 0.05 μm
Electrode diameter Side A	6.6			mm	Key hole
Electrode material Side A	Cr-Au				
Electrode diameter Side B	6.6			mm	Key hole
Electrode material Side B	Cr-Au				

Side A (Plane)



Side B (Plane)



### Ordering Code:

Model (Specification)	Revision	Frequency [MHz]
AXQCS301C	1	3.000

**Revision History**

Rev.	Drawing	Date [dd.mm.yyyy]	Remarks	Author	Checked
1	D0	02.11.2020	First issue AXQCS301C	BN	BN